

A photograph of a large industrial measuring conveyor system. The conveyor is a long, horizontal metal structure with multiple rollers, mounted on a dark metal frame. It is situated in a dimly lit industrial environment, possibly an underground loading station. The background shows various pipes, structural beams, and other machinery. The overall scene is industrial and functional.

**SIEMAG
TECBERG**

**SIEMAG
TECBERG**

TECHNICAL INFORMATION

MEASURING CONVEYOR

(FOR UNDERGROUND LOADING STATIONS)

TECHNICAL INFORMATION

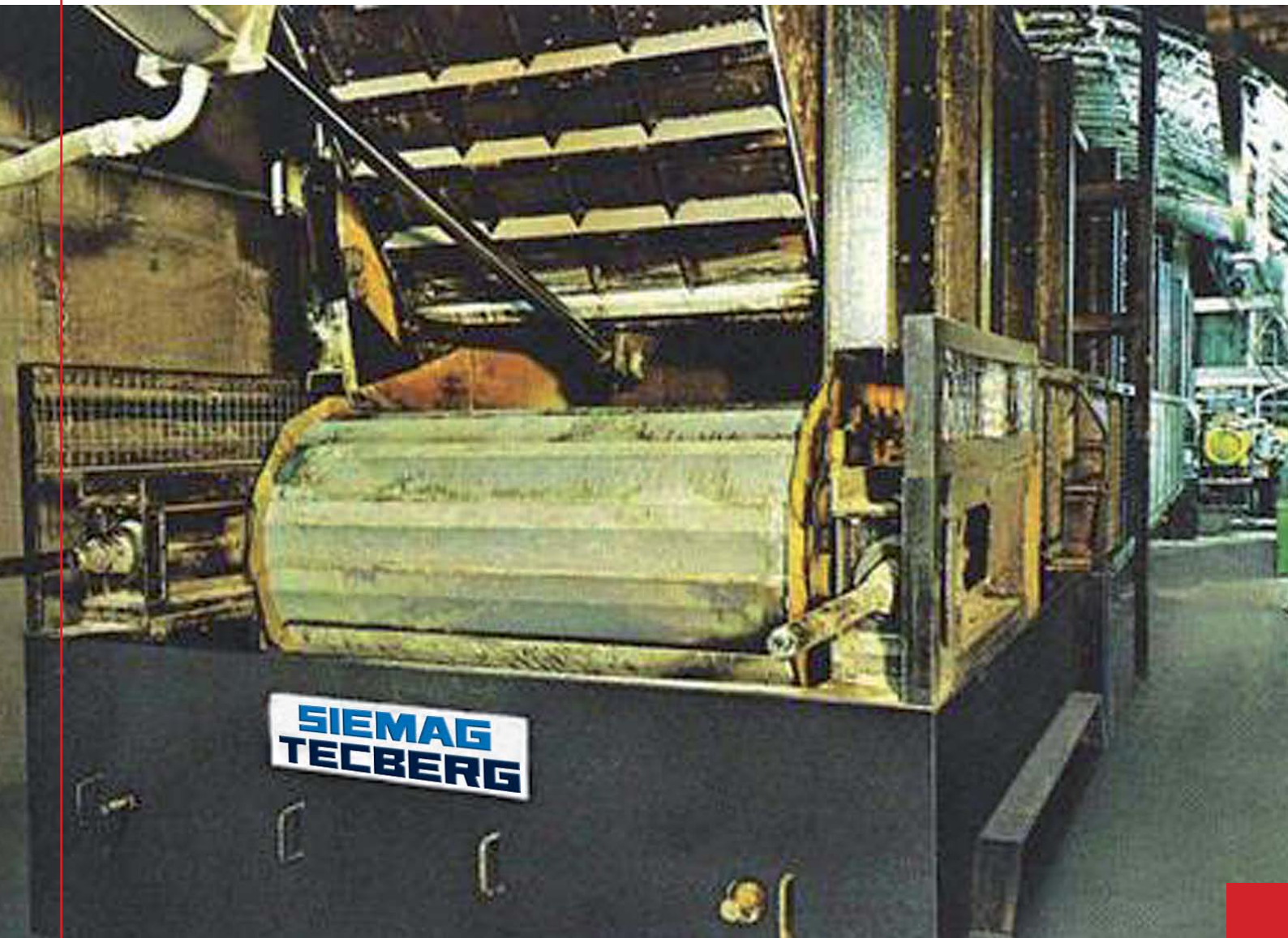
MEASURING CONVEYOR

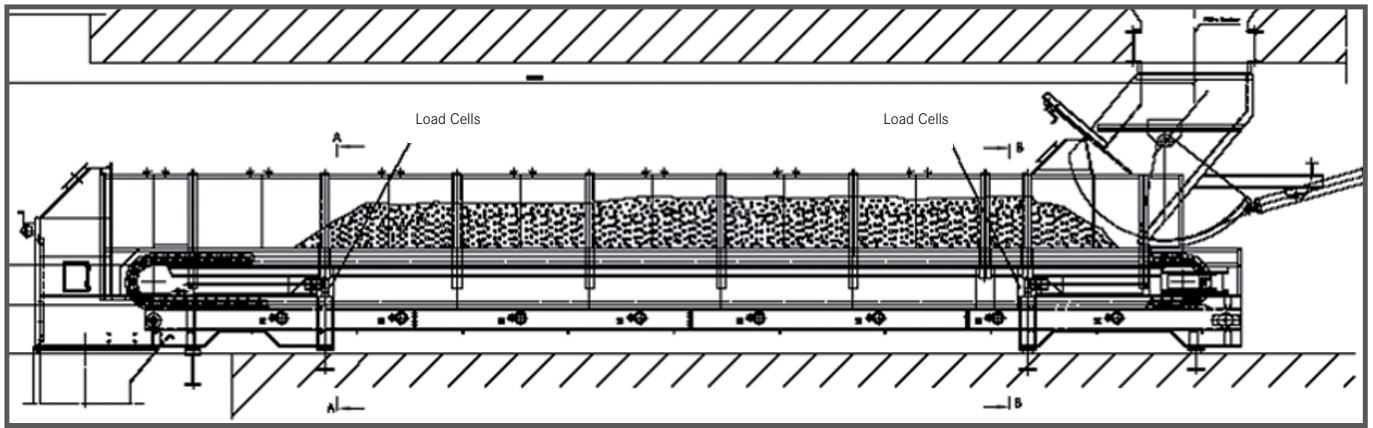
ADVANTAGES

- Gravimetric and volumetric measurement of hoisting material
- Optimal charging of skips
- Compact design, extensive spillage and dust-free operation
- Reduction of loading pockets' size
- Minimizing of excavation in shaft area
- Automatic mode for continuous operation

TECHNICAL DATA (EXAMPLE)

Payload capacity	42.0 m ³ = 42.0 t
Type	apron conveyor
Width	1.8 m
Length	27.7 m
Loading speed	0.28 m/s
Unloading speed	1.0 m/s
Rated motor power	160 kW





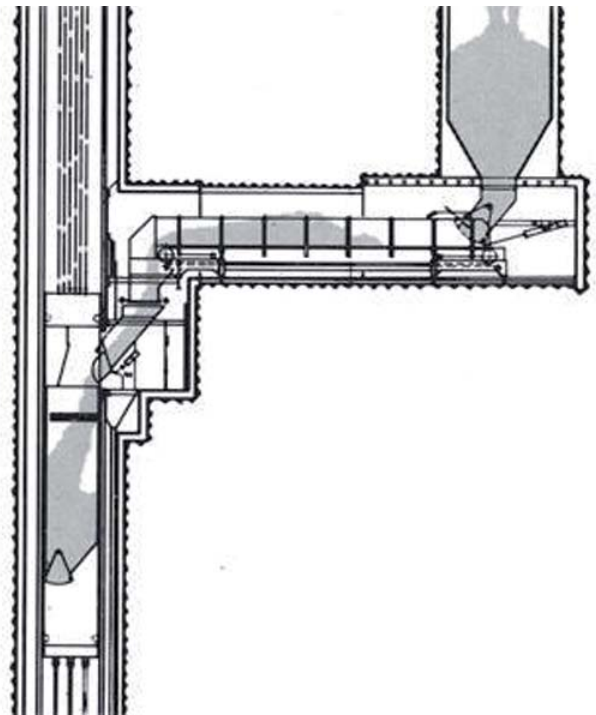
FILLING OF THE SKIPS WITH MEASURING CONVEYOR:

Raw coal from the raw coal bunker feeds the measuring conveyor through a bunker discharge chute. Weighing of the payload on the measuring conveyor is done by means of electronic load cells underneath the measuring conveyor. The measuring conveyor is supported on special girders which allow realigning the conveyor accordingly in case of soil subsidence. A scraper conveyor is installed underneath the measuring conveyor which feeds the spillage material into the discharge/distribution chute.

As soon as the skip arrives at the loading position below one of the loading chutes, a slide shutter provided in the distribution chute directs the coal to the corresponding loading chute.

The measuring conveyor is electrically driven. During downward motion of the empty skip, the measuring conveyor runs at slow speed while it is fed with coal and the load being measured, preparing the load for subsequent discharge into the skip. As soon as the skip has reached the loading position, the measuring conveyor is accelerated to high speed in order to quickly transfer the payload through the distribution and loading chute into the skip.

In order to ensure a continuous and controlled coal flow, the bunker, the measuring conveyors, and the loading chutes are fitted with level monitoring devices. The electrical control system of the loading station assures a safe and continuous operation in the automatic mode. All electrical components will be executed in protection "Ex I" (flame-proof).





LOCATIONS:

GERMANY | HAIGER (HEADQUARTERS)

SIEMAG TECBERG GmbH
 Kalteiche-Ring 28-32
 35708 Haiger, Germany
 Phone +49 2773 91610
 E-Mail info@siemag-tecberg.com

POLAND | KATOWICE

SIEMAG TECBERG POLSKA Sp. z o.o.
 ul. Mickiewicza 29
 40-085 Katowice, Poland
 Phone +48 32 2072086
 E-Mail info@siemag-tecberg.pl

SWITZERLAND | SEDRUN

SIEMAG TECBERG GmbH
 Plant Operation
 7188 Sedrun, Switzerland
 Phone +41 81 9365280
 E-Mail info@siemag-tecberg.ch

CHINA | BEIJING

Beijing SIEMAG TECBERG
 Mining Equipment Co., Ltd.
 Room 21-03, Block A, CITIC Building
 19 Jianguomenwai Dajie,
 Beijing 100004, P.R. China
 Phone + 86 10 8526 1713
 E-Mail info@siemag-tecberg.cn

CHINA | TIANJIN

Tianjin SIEMAG TECBERG Machinery Co., Ltd.,
 Guanyuan Road South,
 Tianjin High-Tech Industrial Park,
 Third Phase Wuqing Development Area,
 Tianjin 301700, P. R. China

AUSTRALIA | SYDNEY

SIEMAG TECBERG Australia Pty Ltd.
 Unit 7, 2 Eden Park Drive (PO Box 1442)
 North Ryde NSW 2113, Australia
 Phone +61 2 9888 3900
 E-Mail info@siemag-tecberg.com.au

SOUTH AFRICA | JET PARK

SIEMAG TECBERG (Pty) Ltd.
 Unit 15, Lakeview Business Park,
 Yaldwin RD, Jet Park, Johannesburg
 P.O. Box 2964, Edenvale 1610,
 South Africa
 Phone +27 11 383 9300
 E-Mail info@siemag-tecberg.co.za

SOUTH AFRICA | GERMISTON

Winder Controls (Pty) Ltd.
 56 Stanley Street, Germiston, Ext. 3, Gauteng,
 P.O. Box 383, Germiston 1400,
 South Africa
 Phone +27 11 873 4650
 E-Mail winder@winder.co.za

USA | MILWAUKEE

SIEMAG TECBERG Inc.
 2969 South Chase Avenue
 Milwaukee, WI 53207, USA
 Phone +1 414 727 5725
 E-Mail info@siemag-tecberg.us